

A portrait of John Dee, an English mathematician, astronomer, and mystic. He is depicted from the chest up, wearing a dark cap and a large, light-colored ruff collar. He has a full, light-colored beard and mustache. The background is dark and indistinct.

John Dee — Elizabethan Magus

Frater Gregory Peters, V°
Golden State College SRICF
24 August 2025

Scholar, Mystic, Court Advisor, Seeker of Angels

A Moonlit Meeting on the Thames

- Imagine: 1575, Queen Elizabeth I visits Dee at Mortlake
 - Dee's world: manuscripts, star-charts, whispered secrets
 - Scientist or mystic?
-



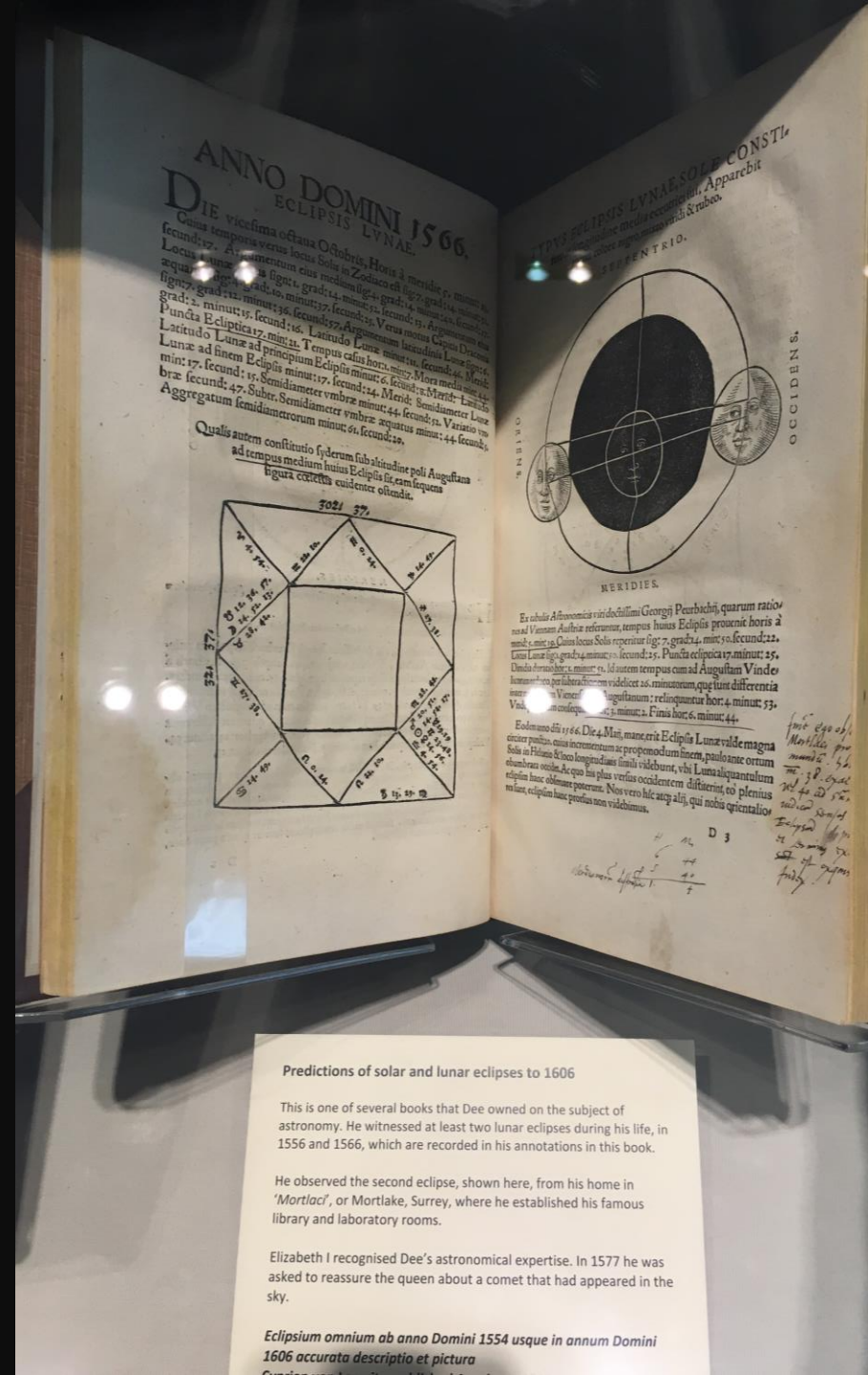
John Dee

1527 – 1609

Renaissance polymath: mathematician, alchemist, astrologer, astronomer, geographer and navigator. His house and outbuildings with a large garden and orchard included this site. His library was the largest in England and many distinguished visitors came to visit. Queen Elizabeth I came by river or on horseback to visit him on several occasions. There is a memorial to him in St Mary the Virgin church opposite.

Scholar and Mathematician

- Born 1527, Cambridge prodigy
- Expert in math, astronomy, navigation, optics
- Advocated Copernican heliocentrism
- Advised explorers like Martin Frobisher



Predictions of solar and lunar eclipses to 1606

This is one of several books that Dee owned on the subject of astronomy. He witnessed at least two lunar eclipses during his life, in 1556 and 1566, which are recorded in his annotations in this book.

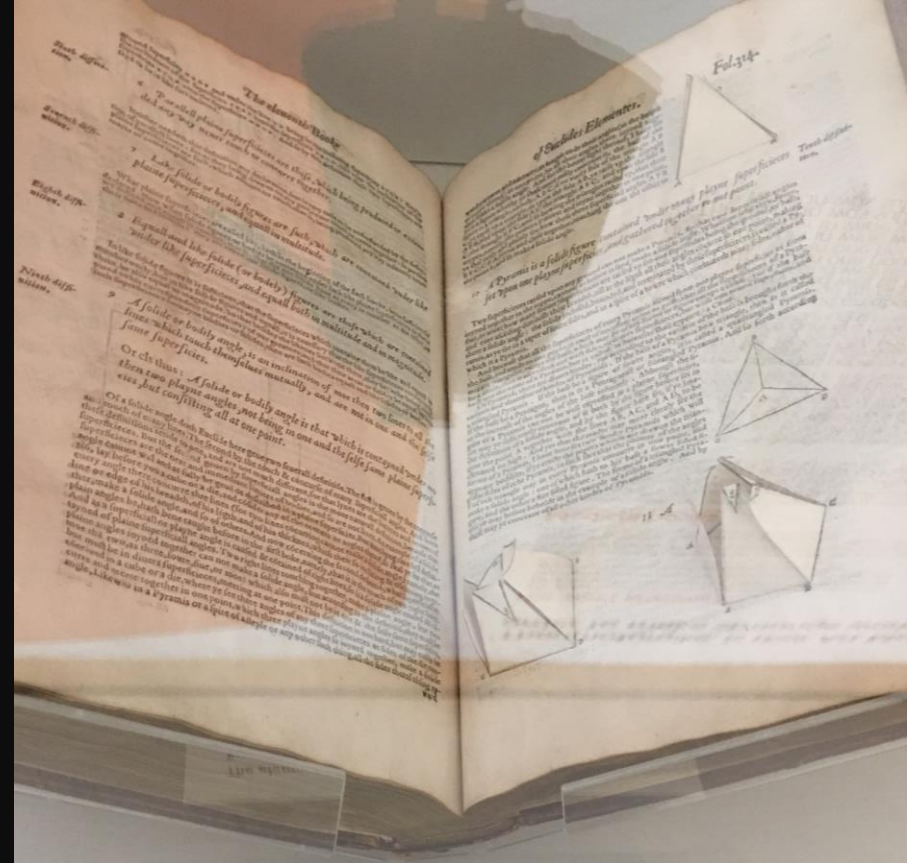
He observed the second eclipse, shown here, from his home in 'Mortlac', or Mortlake, Surrey, where he established his famous library and laboratory rooms.

Elizabeth I recognised Dee's astronomical expertise. In 1577 he was asked to reassure the queen about a comet that had appeared in the sky.

Eclipsium omnium ab anno Domini 1554 usque in annum Domini 1606 accurata descriptio et pictura

England's Largest Private Library

- Over 4,000 books: Euclid, Pythagoras, Cabala, alchemy
- Hub for Europe's seekers
- No conflict between math & magic



The elements of geometrie

Euclid, trans Henry Billingsley, published London, 1570

The ancient Greek author Euclid's treatise is considered to be the foundation of modern mathematics. Dee wrote a long preface for the first English translation, published in 1570. Dee lectured on Euclid in Paris in 1550. People reportedly listened through windows because the hall was so full.

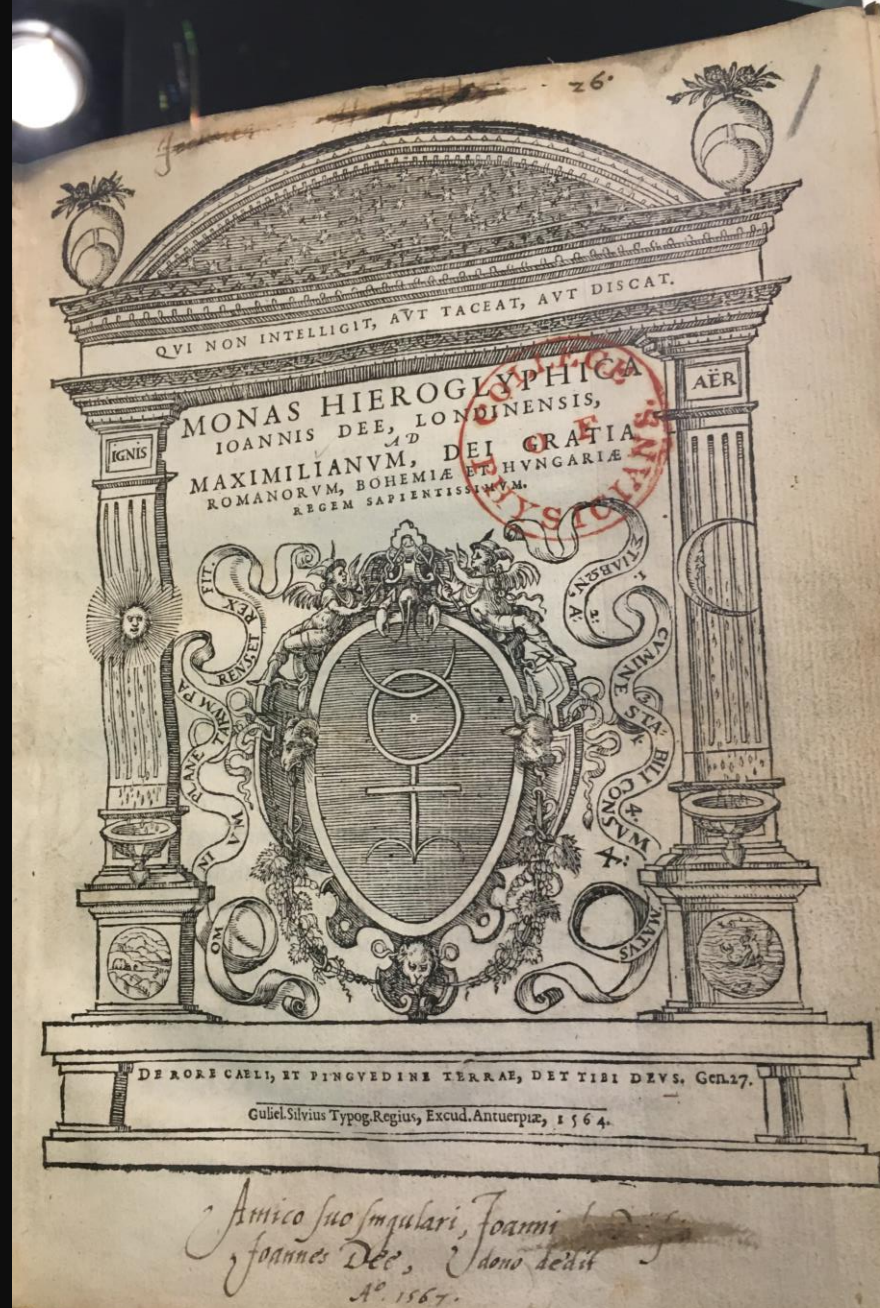
In his preface, Dee explained that knowledge of mathematics and its methods and applications would enable scientific advancement. He believed that Englishmen must learn mathematics in order to master disciplines as diverse as navigation, hydrology, architecture, geography, music and astrology.

This book was issued with sheets of templates for three-dimensional diagrams to be cut out and pasted in. Many of these diagrams are still intact.

Royal College of Physicians

A Glyph for the Cosmos

- 1564: Monas Hieroglyphica published
- Combines sun, moon, Aries, cross, mercury
- Symbolic key: macrocosm mirrors microcosm
- Influenced Rosicrucian thought



Astrologer and Royal Advisor

- Selected Elizabeth I's coronation date
 - Aligned rule with celestial order
 - Lost favor as court grew wary of mysticism
-



Communion with Angels

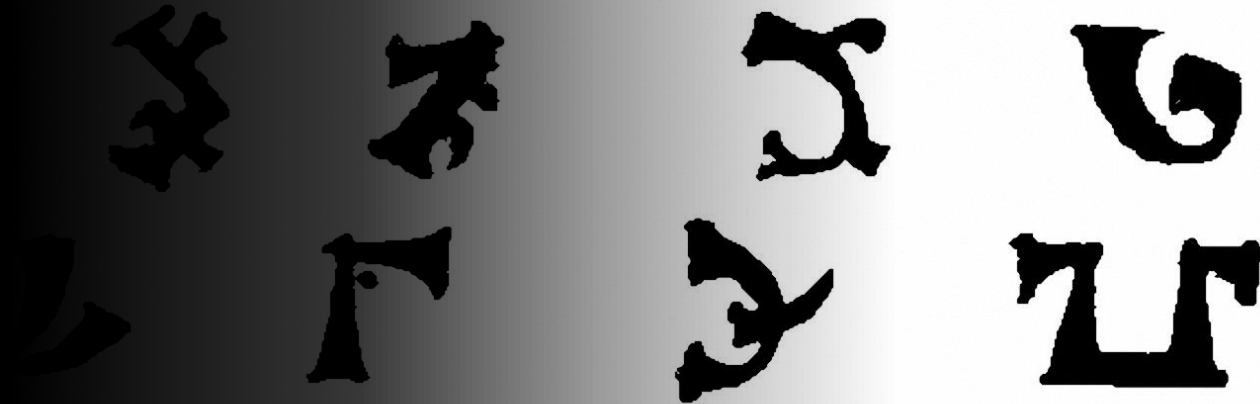
- Late 1580s: scrying with Edward Kelley
 - Rituals: prayers, wax seals, black obsidian *showstone*
 - Transcribed Enochian language: Adam's tongue
 - “After fasting and prayer... we set the shewstone upon the Table”
 - (Sloane MS 3188),
-



The Voice of Angels

- 1st Enochian Key sample:
- "Ol sonf vorsg..."
- Believed to be Book of Enoch restored
- Dictated in reverse to guard power

...and soft yeloh
...of the ~~book~~ in black.
...and proper...



Woman Clothed with the Sun

- Daughter of Fortitude, 1587
 - “I am Understanding and Science dwelling in Darkness...”
 - Echoes Gnostic Sophia
 - Hermetic struggle: purity & corruption
-



A Shattered Partnership

- Angels demanded radical obedience
- Dee & Kelley's relationship shattered
- Returned to England; library plundered, reputation ruined



Dee's Echoes Through Time

- Enochian revived by Golden Dawn & Crowley
- Monas inspired Rosicrucian manifestos
- Science & mysticism intertwined

o	n	s	a	r	o	Y	a	u	b	x	T	a	g	c	o	n	z	i	n	l	G	m
i	T	t	x	o	P	a	c	o	C	a	n	h	o	d	D	i	a	l	a	a	o	c
g	a	s	o	n	r	b	z	n	h	r	f	a	t	A	x	i	v	V	s	P	s	M
o	n	d	a	T	d	i	a	r	i	P	S	a	a	i	z	a	a	r	V	r	o	i
o	i	b	A	h	a	o	s	p	i		m	p	h	a	r	s	l	g	a	i	c	h
a	b	a	V	i	x	g	a	z	d	h	M	a	m	g	l	o	i	n	L	i	r	x
i	i	t	T	p	a	l	O	a	i		o	l	a	a	D	a	g	a	T	a	P	a
a	m	o	o	o	a	C	u	c	a	C	p	a	L	c	o	i	d	x	P	a	c	n
o	c	O	T	t	n	p	r	a	T	o	n	d	a	z	N	z	i	V	a	a	s	a
a	n	m	a	g	o	t	r	o	i	m	i	i	d	P	o	n	s	d	A	s	p	i
i	a	l	r	a	P	m	z	o	x	a	x	r	i	n	h	t	a	r	n	d	i	J
t	i	b			a	T	n	a	n		n	a	n	T	a		b	i	t	o	m	
a	Z	a	R	o	p	h	a	R	a	a	d	o	n	p	a	T	d	a	n	V	a	a
n	a	x	o	P	S	o	n	d	n		o	l	o	a	G	e	o	o	b	a	v	a
g	r	a	n	o	a	m	a	g	g	m	O	P	a	m	n	o	O	G	m	d	n	m
P	m	n	i	n	g	b	e	a	l	o	a	b	l	s	T	e	d	e	c	a	o	P
O	n	i	z	i	r	l	e	m	u	C	s	c	m	i	a	o	n	A	m	l	o	x
i	n	r	C	z	i	a	M	h	l	h	V	a	r	s	G	d	L	b	r	i	a	P
r	d	i	a	l	h	C	t	G	a		o	i	P	t	e	a	a	P	D	o	c	e
c	a	m	c	h	i	a	s	o	m	p	p	s	v	a	c	n	r	Z	i	r	Z	a
b	i	z	m	i	i	l	P	i	z		S	i	o	d	a	o	i	n	r	z	f	m
a	n	a	B	a	m	S	m	a	L	r	d	a	l	t	T	d	n	a	d	i	r	e
l	o	F	i	n	i	a	n	b	a	a	d	i	x	o	m	o	n	s	i	o	s	P
P	a	o	c	s	i	z	i	x	p	x	O	o	D	p	z	i	A	p	a	n	l	i
t	i	r	V	a	s	t	r	i	m	e	r	g	o	a	n	n	q	A	C	r	a	r

Science and Mysticism Intertwined

- Boundaries between reason & revelation
- Neoplatonic unity, cosmic harmony
- A mind reaching for the stars: telescope & crystal ball

Near this place lie the remains of
JOHN DEE MA
CLERK IN HOLY ORDERS
1527 ~ 1609
Astronomer, Geographer
Mathematician
Adviser to Queen Elizabeth I

Thank You

- “To study Dee is to glimpse the Renaissance mind...”
 - Thank you for listening
 - Questions welcome!
-

